

# 防犯用機器の案内

株式会社マグネテックジャパン



## **Model PC15000 33 Multi-Zone Walk Through Metal Detector**



**PC15000**

### **Introduction**

Technology: DSP, Pinpointing 33 multi-zone, Bi-Detection, Discrimination, Multiple Mode

Model PC15000 is the most accurate 33 multi-zone metal detector has most advanced technology applied.

Application: Airport, Seaport, Building, Sports Event, and etc.

### **Main Feature**

- None blind spot by pinpointing 33 multi-zone detection
- Instant and accurate detection by using most advanced DSP.
- Bi-detection technology eliminates the sensitivity difference between panels.
- High Discrimination mode for various metal objects are programmed.
- Access Control system, CCTV and other equipment can be integrated using ports.
- Remote Controller is available
- 1~99 units can be operated by controlling program on computer.

## **Model PC15000 33 Multi-Zone Walk Through Metal Detector**

### **Technical Feature**

**Advanced DSP:** Through the use of Digital Signal Processing (DSP), this system exhibits extraordinary noise reduction and increased operating reliability. Instant and accurate detection is possible by using most advanced DSP.

**33 Multi-zone:** 33 Multi-zone Technology can display the position of metal objects in 33 different zone that is divided vertically and horizontally.

**Bi-direction:** Bi-direction Detection System provides multi-field detection within the entire archway. The patented antenna and electronics system is combined with specially designed software. These physical resources produce the lowest false alarm rate for any given target.

**Discrimination:** Model PC15000 has a function of high discrimination. It can reduce the response to normal metal object that a person can possess usually like keys, coins, watch and so on. Model PC15000 provides variable detection programs. By selecting program, operator can change the response to normal metal object and to other metal object easily.

Programming includes preset detection programs as specified by internationally recognized authorities, and various metal specific programs

**Multiple Mode:** it is developed that various detection programs and applied its cure technology to walk through metal detectors. Through the detection program, walk through metal detector can be operated suitable for each situation like in prison, airport, building, sports event, or factory for anti-thief.

Operator can select and save program for more convenience and efficient checking circumstance.

**Easy User Interface:** Using 4 buttons, operator can change the setting value of the program.

**4 digit Security Key:** To access main program, it is required to input 4 digit password. User can change password and program it.



## **Model PC150 Hand Held Metal Detector**



**PC150**

### **Introduction**

This hand held metal detector is especially designed for use at airports, seaports, important buildings, schools, hospitals, industrial sites, and etc. It can detect both ferrous and nonferrous metals. With the wide scan zone, it can easily locate those objects containing metals, such as concealed weapons, tapping devices.

This hand held metal detector is solid and elegant, and you may use them with an easy mind because they do not harm to human-body as well as animals or plant.

### **Main Feature**

- *Excellent appearance & Light weight*
- *Super High Sensitivity*
- *Sensitivity Reduce Button (De-Sense Button)*
- *Low Battery Consumption*
- *Low Battery Warning Lamp*
- *Easy open Battery Lid*
- *Vibration Mode*
- *Earphone Jack*

## **Model JI-UVSS Under Vehicle Searching System**



**JI-UVSS**

### **Introduction**

The Under Vehicle Searching System provides a safe, rapid, and thorough method of examining the undercarriage of passenger and commercial vehicles.

The system consists of a high-resolution color scanning camera, and utilizes super bright LED illumination.

### **Main Feature**

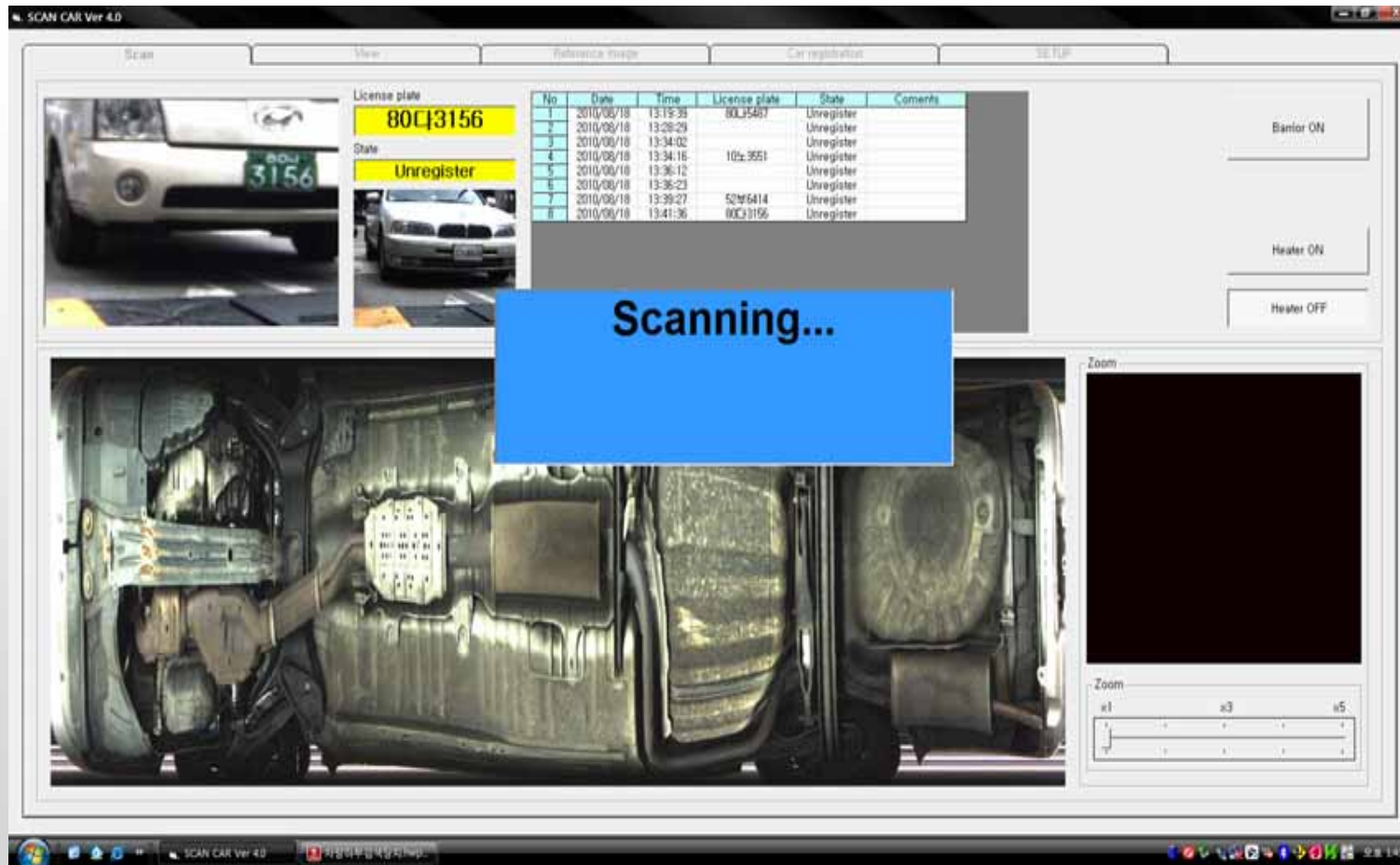
- *Speed: up to 30km/h*
- *High resolution full color image*
- *No adjustment is needed for all kind of vehicle*
- *All-weather operation in day or night*

### **Option Feature**

- *License Plate Recognition Camera*

# Model JI-UVSS Under Vehicle Searching System

## Operation Screen Feature



# Model JI-UVSS Under Vehicle Searching System

## Operation Screen Feature

